

Summer Review

As we officially break for the summer this week I'm suggesting that we use the time to take stock.

- 1- Look back at the work you've been producing since March.
- 2- Group the works in a way which makes sense to you.
- 3- Is there a piece of work/ or works that suggest a line of enquiry which you feel you would like to explore further?
- 4- Can you identify an artist whose work you would like to find out more about that is relevant?
- 5- Write a short proposal or pose a question that sums up your thinking. This doesn't need to be set in stone but is instead a starting point.
- 6- Share your project idea and a picture of the work that has inspired it.



You may have noticed that there's someone else in the group that has a similar creative interest. You may want to use this group as a way of offering creative support to each other.

I thought you might enjoy looking at this artists proposal from Phyllida Barlow.

<https://www.tate.org.uk/whats-on/tate-britain/exhibition/tate-britain-commission-2014-phyllida-barlow/exhibition-catalogue/proposal>

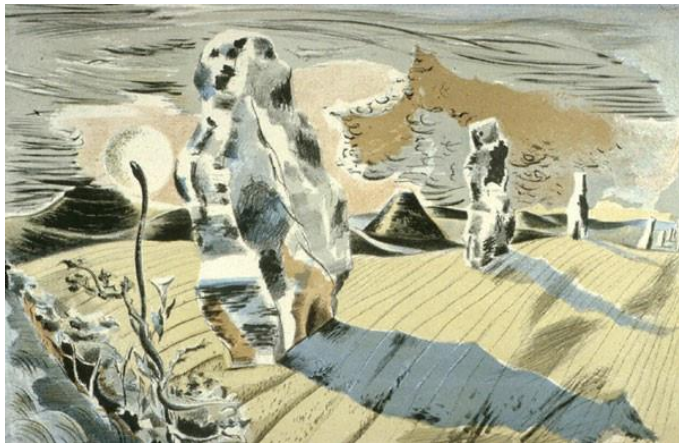
As we look ahead to the summer, here is one final, summer-themed picture from Wolverhampton Art Gallery's Collection. In the summer of 1937, the artist Paul Nash went walking through Avebury, passing a field with ancient stone monoliths coated in black and orange lichen. His journey inspired this picture.

Avebury, 1937

Paul Nash (1889 – 1946)

Lithograph

1938



And this summer-

Don't forget your warm up!

I'd like to invite you to share your favourites and suggest new ones to the group.

Perhaps group members could take it on themselves to share warm up ideas?

I will be sharing a CreateSpace Summer Project Idea each Wednesday and will continue to post in response to your work with my CreateSpace hat on. Here's a link to the project resources. <https://www.creativehealthcic.co.uk/projects/createspaceworkshops/>

